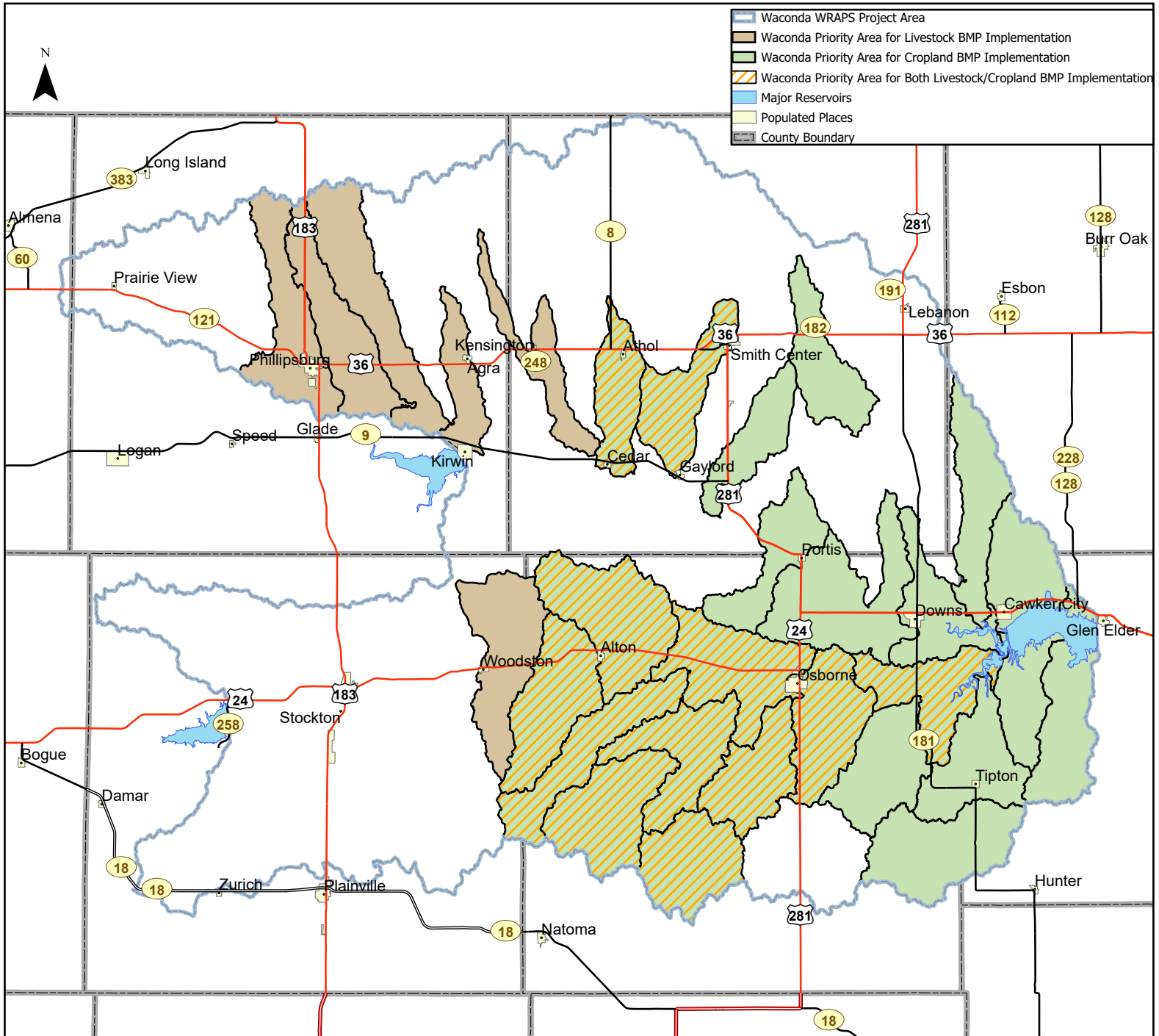


Waconda Watershed Targeted Areas



Eligible BMPs:

- Waterways
- Terraces
- No-till
- Riparian Buffers
- Rotational Grazing
- Brush Management
- Alternative Livestock Waterers
- Wind Breaks
- Critical Area Planting
- Fencing/Livestock Exclusion
- Cover Crops

Targeted HUC12's:

102600120207	102600140305
102600120305	102600140306
102600120309	102600140307
102600120401	102600140401
102600120403	102600140403
102600120404	102600140404
102600120408	102600140405
102600120409	102600140406
102600140206	102600150101
102600140207	102600150102
102600140301	102600150103
102600140302	102600120206
102600140303	102600120107
102600140304	102600120105
	102600120104
	102600120103

WRAPS cost-share is based upon the rate of \$30 per pound of phosphorus loading reduced.

For eligibility and questions about the Waconda WRAPS program, contact your county's Conservation District Manager.

