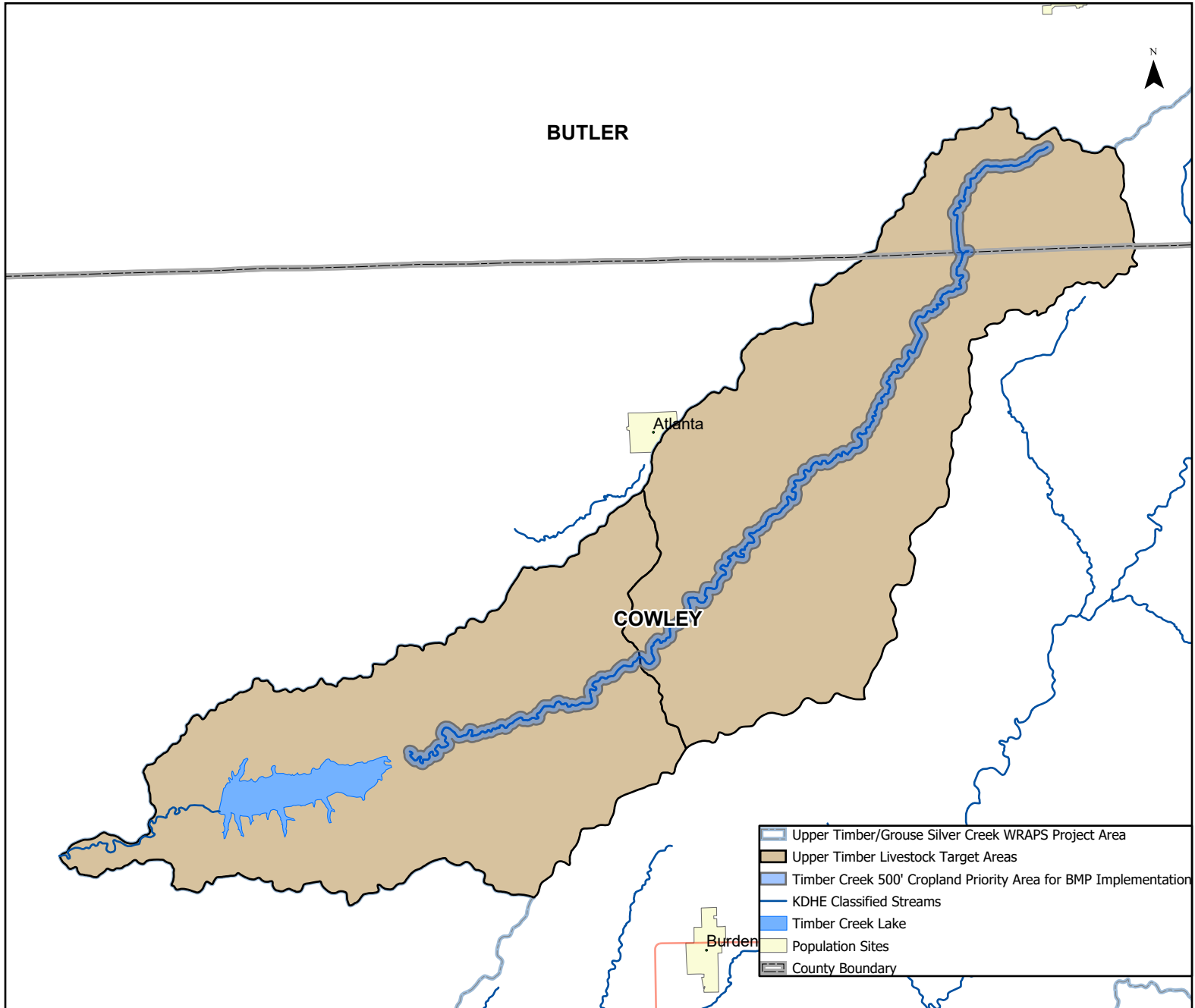


Upper Timber Creek Watershed Targeted Areas



Eligible BMPs:

- Riparian and Field Buffers
- No-till
- Convert Cropland to Grassland
- Serecia lespedeza control
- Brine Scar Remediation
- Nutrient Management Plans
- Fertilizer/Manure Incorporation
- Retain CRP Contracts
- Vegetative Filter Strips
- Relocation of Stream Feeding Sites
- Relocation of Pasture Feeding Sites
- Alternative Livestock Waterers
- Cover Crops

Targeted HUC12's:

- 110300180402
- 110300180403

WRAPS cost-share is based upon the rate of \$30 per pound of phosphorus loading reduced.

For eligibility and questions about the Upper Timber WRAPS program, contact your county's Conservation District Manager.

