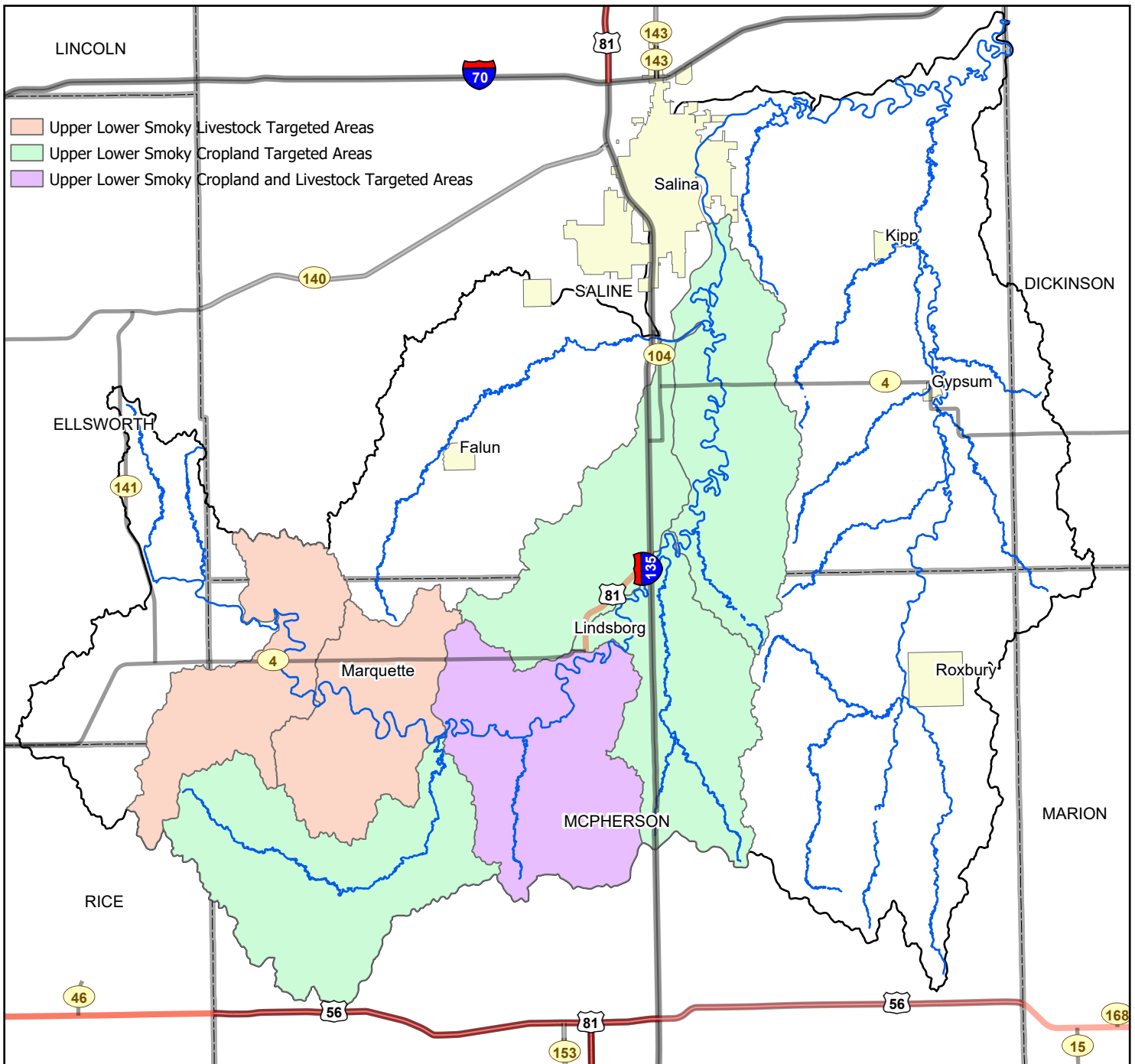


Upper Lower Smoky Hill Watershed Targeted



Eligible BMPs:

- Permanent Vegetation
- Grassed Waterways
- No-till
- Terraces
- Nutrient Management
- Vegetative Filter Strips
- Relocation of Feeding Pens
- Relocation of Pasture Feeding Sites
- Off-stream Watering Systems
- Cover Crops

Targeted HUC12's:

102600080104
 102600080305
 102600080102
 102600080105
 102600080304
 102600080301
 102600080103

WRAPS cost-share is based upon the rate of \$30 per pound of phosphorus loading reduced.

For eligibility and questions about the Upper Lower Smoky Hill WRAPS program, contact your county's Conservation District

