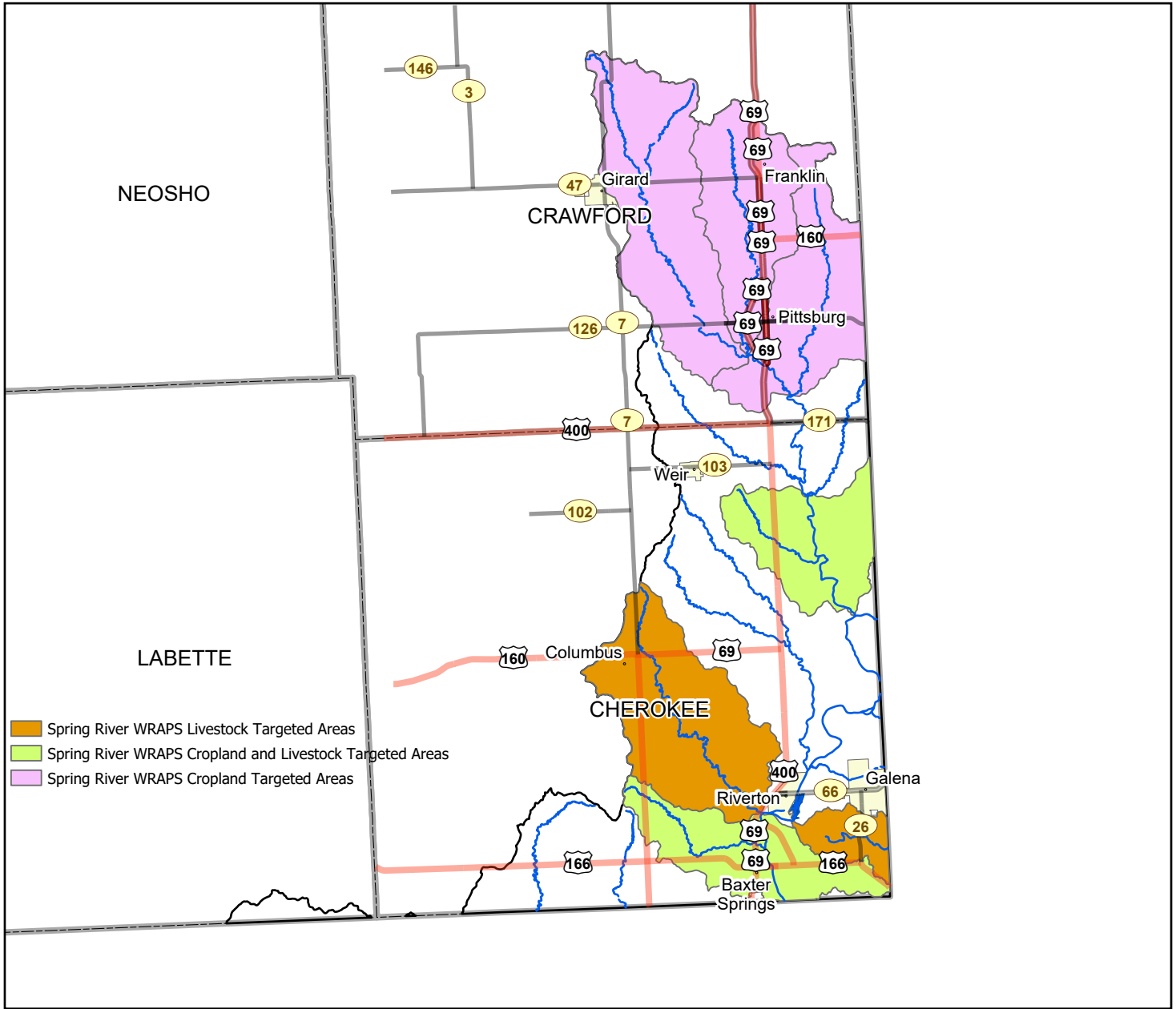


Spring River Watershed Targeted Areas



Eligible BMPs:

- Permanent Vegetation
- Grassed Waterways
- No-till
- Terraces
- Nutrient Management
- Vegetative Filter Strips
- Relocation of Feeding Pens
- Relocation of Pasture Feeding Sites
- Off-stream Watering Systems
- Cover Crops

Targeted HUC12's:

- 110702070401
- 110702070402
- 110702070403
- 110702070405
- 110702070903
- 110702071002
- 110702070806

WRAPS cost-share is based upon the rate of \$30 per pound of phosphorus loading reduced.

For eligibility and questions about the Spring River WRAPS program, contact your county's Conservation District Manager.



KANSAS
wraps

