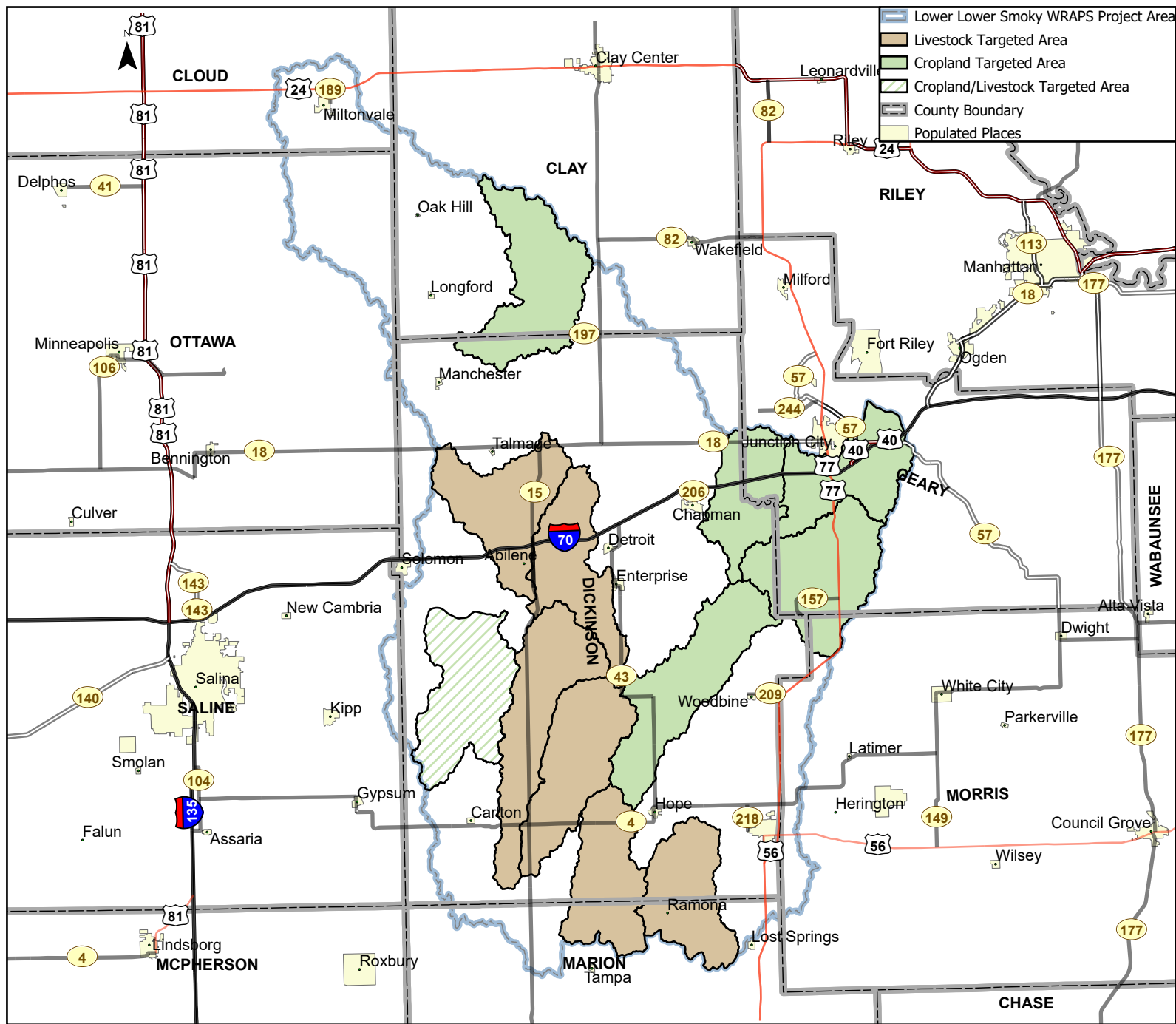


Lower Lower Smoky Watershed Targeted Areas



Eligible BMPs:

- Permanent Vegetation
- No-till
- Terraces
- Nutrient Management Plans
- Grassed Waterways
- Vegetative Buffers
- Water Retention Structures
- Vegetative Filter Strips
- Relocate Feeding Pens
- Relocate Pasture Feeding Sites
- Alternative Livestock Waterers
- Rotational Grazing
- Cover Crops

Targeted HUC12's:

- 102600080402
- 102600080405
- 102600080502
- 102600080503
- 102600080504
- 102600080605
- 102600080701
- 102600080705
- 102600080706
- 102600080801
- 102600080805
- 102600080804

WRAPS cost-share is based upon the rate of \$30 per pound of phosphorus loading reduced.

For eligibility and questions about the Lower Lower Smoky WRAPS program, contact your county's Conservation District Manager.



KANSAS
wraps

