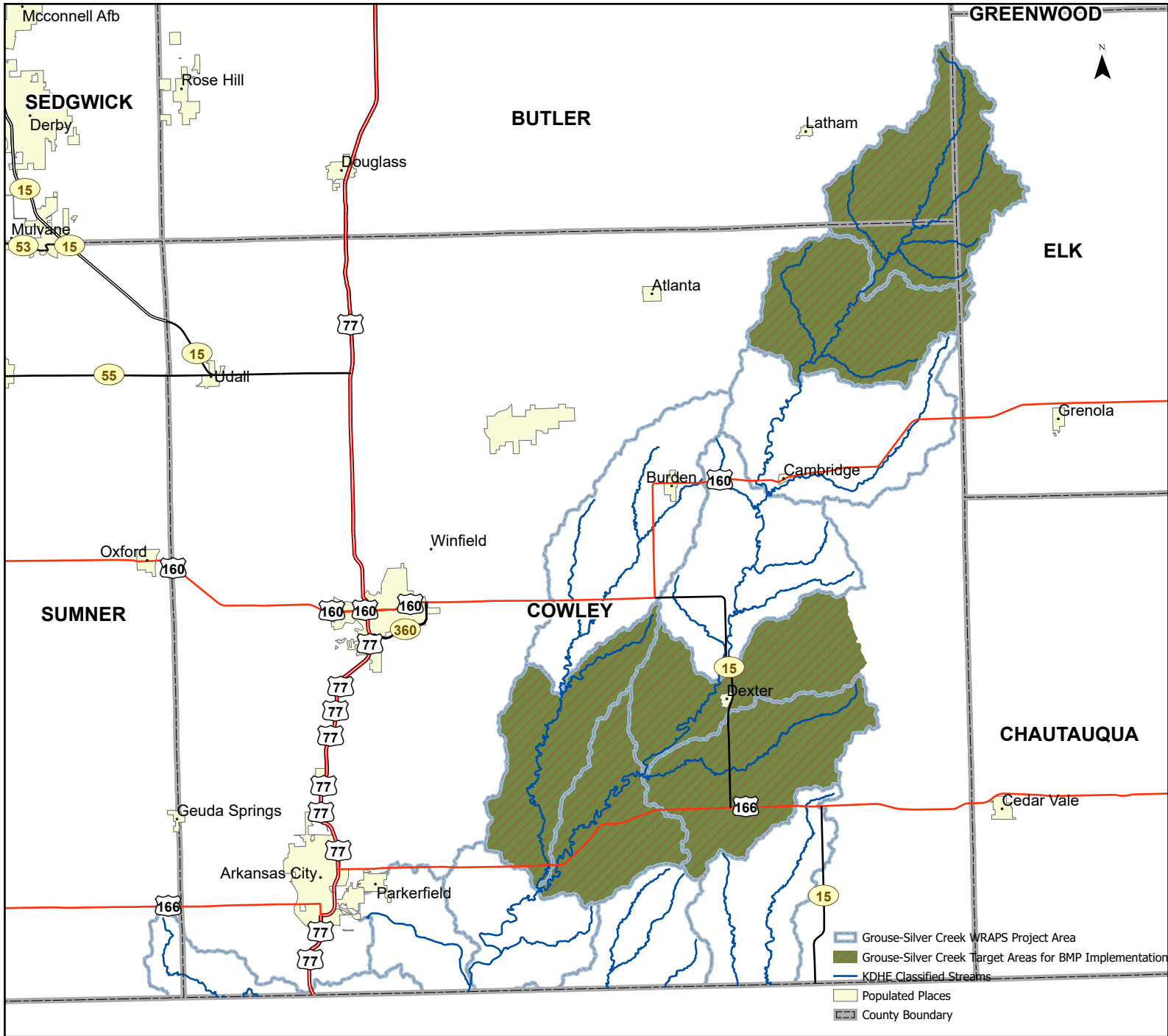


Grouse-Silver Creek Watershed Targeted Areas



Eligible BMPs:

- Riparian and Field Buffers
- No-till
- Cover Crops
- Covert Cropland to Grassland
- Grassed Waterways
- Serecia lespedeza Control
- Brine Scar Remediation
- Nutrient Management Plans
- Fertilizer/Manure Incorporation
- Retaining CRP Contracts
- Vegetative Filter Strips
- Relocation of Pasture/Feeding Operations away from streams
- Alternative Livestock Watering Systems

Targeted HUC12's:

- 110600010102
- 110600010205
- 110600010206
- 110600010207
- 110600010201
- 110600010202

WRAPS cost-share is based upon the rate of \$30 per pound of phosphorus loading reduced.

For eligibility and questions about the Grouse-Silver Creek WRAPS program, contact your county's Conservation District Manager.



KANSAS
wraps

